

WCCI 2013-2015

Section H: retros

Joaquim Crusats

[joaquimchessproblem@gmail.com](mailto:joaquimchessproblem@gmail.com)

Plaça de l'estació 1, 3r,3a.

08500-Vic

Catalonia (Spain)

Joaquim Crusats; *Problemas*, 2015.

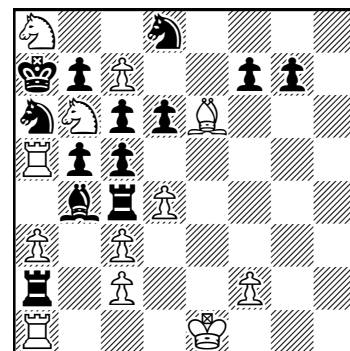
October 2015, issue No.12, p.269.

N2n4/kpP2pp1/nNppB3/Rpp5/1brP4/P1P5/r1P2P2/R3K3

Proca -7 & #1

Joaquim Crusats

*Problemas*, 2015



(12+13)

Proca -7 & #1

**Main plan:** -1.Sd7-b6 threatening -2.Sb6-a8 & 1.c8=S#; but there is an obstacle: -1...b6-b5! White needs a foreplan to illegalize Black's defense:

**Solution:** -1.Kd2-e1 Rb2-a2 -2.Rd1-a1 R~-b2 -3.Kc1-d2 R~(+); note that White's two first retractions do not transpose because the bR cannot be allowed to reach the c1 square; -4.0-0-0 R~-5.d2-d4; note also that this move must be retracted after the uncastling because otherwise the bRc4 could prevent the uncastling (both bRs are used to assure that there are no transpositions of moves in the solution); -5...~ and now the main plan works: -6.Sd7-b6 ~ (-6...b6-b5? is now illegal because then the dark-squared bishops could not have crossed via a1 owing to the uncastling; with an empty b6 square, though, the bBb4 can retract to b8, then, the bPb5 retracts to b6 to recapture the ds-wB implying that the bBb8 was promoted on g1, and then the original ds-bB can be recaptured on c3 when the original ds-wB is back to his homebase; finally, the original ds-bB can go to f8 and the cage is released with e7xXd6; -7.Sb6-a8 & 1.c8=S#.

**Unthematic try:** White can try to force a bSd8 retraction, after blocking the SW-bR with the wK, so that the wR can reach b8 and mate with 1.Sc8#. However, this plan is one move too slow.

*Logical Proca retractor with hidden classical-style retro content in which an uncastling maneuver is performed starting with both the king and rook in their home positions.*

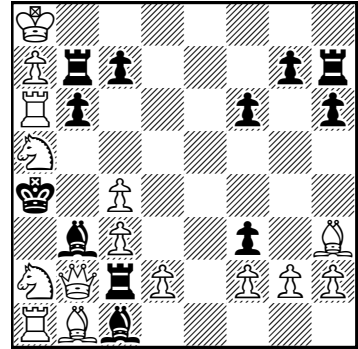
WCCI 2013-2015  
Section H: retros

Joaquim Crusats  
[joaquimchessproblem@gmail.com](mailto:joaquimchessproblem@gmail.com)

Plaça de l'estació 1, 3r,3a.  
08500-Vic  
Catalonia (Spain)

Joaquim Crusats; *Die Schwalbe*, 2014.  
*Die Schwalbe*, Band XXXI April 2014, 15921, p.448.  
Corrected version: 15921v, October 2014.  
K7/Prp3pr/Rp3p1p/N7/k1P5/1bP2p1B/NQrP1PPP/RBb5  
Release the position

Joaquim Crusats  
*Die Schwalbe*, 2014



(14+12) Release the position

**Solution:** -1.Bc8-h3 Rh8-h7 -2.Be6-c8 Rh7-h8+ -3.Bg8-c6 Rh8-h7 -4.Bd5-g8 Rh7-h8+ (first thematic double screening maneuver by the ls-wB) -5.Bf7xPd5 d7-d5 (screening) -6.Be8-f7 (screening) Rh8-h7 -7.e7-e8=B Rh7-h8+, ..., -10.e4-e5 e5xBf4 -11.Bg5-f4 e6-e5 -12.Bd8-g5 Rh8-h7 -13.Be7-d8 Rh7-h8+ -14.Bf8-e7 Rh8-h7 -15.Ba3-f8 Rh7-h8+ (second thematic double screening maneuver by the ds-wB to perform an additional screening on a3) and the cage is open: -16.Sb4-a2 Ba2-b3 etc.

*Bicolor echoed double screening bishop maneuver.*

WCCI 2013-2015

Section H: retros

Joaquim Crusats

[joaquimchessproblem@gmail.com](mailto:joaquimchessproblem@gmail.com)

Plaça de l'estació 1, 3r,3a.

08500-Vic

Catalonia (Spain)

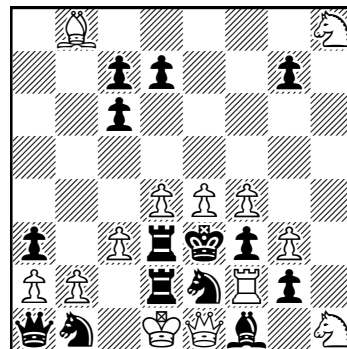
Joaquim Crusats; *The Problemist*, 2013.

Vol 64, No. 6, November 2013, R465, p.250.

1B5N/2pp2p1/2p5/8/3PPP2/p1PrkpP1/PP1rnRp1/qn1KQb1N

Release the position

Joaquim Crusats  
*The Problemist*, 2013



(13+14) Release the position

**Try:** -1...Rc2xRd2+ -2.h7-h8=S? a4-a3 -3.h6-h7 a5-a4 -4.h5-h6 a6-a5 -5.h4-h5 and Black is retro-stalemated.

**Solution:** -1...Rc2xSd2+! -2.Sf7-h8 a4-a3 -3.Sg5-f7 a5-a4 -4.Sh3-g5 a6-a5 -5.Sg1-h3 Sc1-e2 -6.Se2-g1+ Sa3-b1 -7.Ba7-b8 Sc4-a3 -8.Sb3-d2 Sd2-c4+ etc; now White unpromotes the wS on h8 and h3xXg2 opens the cage.

*anti-Pronkin wSh8.*

WCCI 2013-2015

Section H: retros

Joaquim Crusats

joaquimchessproblem@gmail.com

Plaça de l'estació 1, 3r,3a.

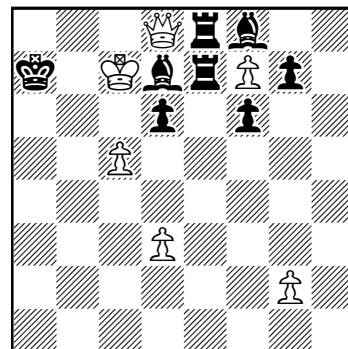
08500-Vic

Catalonia (Spain)

Joaquim Crusats; 4<sup>th</sup> FIDE world cup, 2015; 2<sup>nd</sup> HM.

3Qrb2/k1KbrPp1/3p1p2/2P5/8/3P4/6P1/8

Add white pawns in dark squares and black pawns in light squares, then #1

Joaquim Crusats  
4<sup>th</sup> FIDE world cup, 2015

(6+8)

Add white pawns in dark squares  
and black pawns in light squares,  
then #1

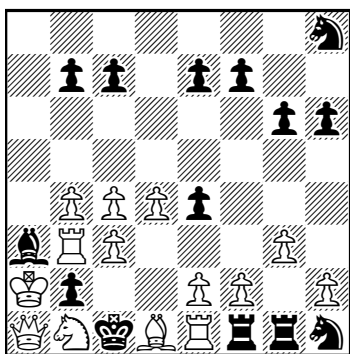
**Solution:** The stipulation prevents using a bPb6 or a wPb7; moreover, Black cannot be proved to be on the move so as to mate White. Thus this stipulation is only compatible with an *en passant* mate, but how? Add: wPs a3, d2, g3 and bPs a6, b5, c2, c6, e6 to reach 3Qrb2/k1KbrPp1/p1pppp2/1pP5/8/P2P2P1/2pP2P1/8. Now 1.cxb6 e.p.#! -1...b7-b5 -2.b4xSc5 Sa4-c5 -3.Qc8-d8 Sb6-a4 -4.Qd8-c8 Sc8-d6 -5.a2-a3 (the only tempo move available: -5...b3-b4? leaves the wRa1 outside the cage created by the wBf1 and wPc2 and wPe2; -5.h3xXg3? leaves the wRh1 outside the cage created by the wBf1) -5...Ka8-a7 -6.Kb6-c7 Sa7-c8+ -7.Qc7-d8+ and the position unfolds.

-1...b6-b5? A tempo is wasted and this leads to pure retro-opposition or retrostalemate: -2.Qc8-d8 Rd8-e8 -3.a2-a3 Re8-e7 -4.c4-c5 Be7-f8 (-4...exBf6? but the bRh8 is trapped inside the NW-cage) -5.c3-c4 R~f8 retro-stalemate (-6.b7xXc8=Q? illegal).

*Pure retro-opposition as a motivation for an e.p. mate. Although retro-opposition had been shown in 1939 in relation to an e.p. capture, see below, the e.p. capture was not a mating move. No further anticipation seems to exist.*

Harold H. Cross

The Fairy Chess Review, 1939



(14+14)

h#1

Solution: 1.Ba3\*b4 Qa1\*b2 Can Black to play capture en passant? Retract 1.d2d4! d5xNe4 2.Ng5e4 Rg2g1 3.Nf3g5 Rg1-f1 4.Rf1e1 d6d5 5.Ne1f3 h7h6 6.Bc2d1 Kd1c1 7.B~c2+ 1.d2-d3? doesn't work because of RetroOpposition. So Black can capture en passant!

*Solution as presented in YACPDB*

WCCI 2013-2015

Section H: retros

Joaquim Crusats

joaquimchessproblem@gmail.com

Plaça de l'estació 1, 3r,3a.

08500-Vic

Catalonia (Spain)

Joaquim Crusats; *Problemas*, 2015.

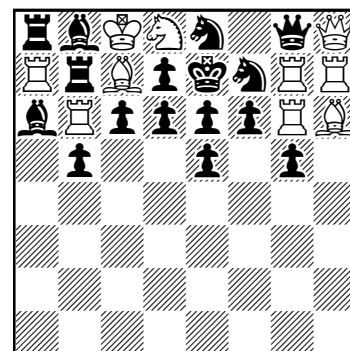
April 2015, issue No.10, p.233.

rbKNn1qQ/RrBpknRR/bRppppRB/1p2p1p1/8/8/8/8

TM 4

Joaquim Crusats

*Problemas*, 2015



(10+16)

TM 4

**Stipulation:** White to play, find four traceable moves. A traceable move is a legal forward chess move which can be uniquely determined by conventional retroanalysis from the position arising immediately after it has been played (with Black to move).

**Solution:** The position is legal. The four traceable moves are: **1.Sd8xSf7** (-1.Bd8-c7? but illegal retrocheck); **1.Bc7xBb8** (-1.c7xBb8=B? or -1.c7xBd8=S? lead to two illegal clusters in the NW corner); **1.Ra7xRb7** (-1.Ra7-b7 bxXc6+? illegal because then the light-squared-bB is caged out); **1.Qh8xQg8** (-1.Qh8-g8? or -1-Rh8xQh7? but Black is retro-stalemated; -1.Rh8-h7 Kf8-e7 -2.Qh7xQg8+, or hxQg8=Q+, -2...Ke7-f8? but White is retro-stalemated; -2...e7-e6 -3.Se6-d8? but illegal retrocheck); There are no other traceable moves (cooks): **1.Rg7xSf7+?** -1.Rf8xSf7+! and the position also unfolds.

*Using a new form of twinning all four "officer x analogous officer" cases are shown (without check) for the first time as unique retro-moves.*

WCCI 2013-2015

Section H: retros

Joaquim Crusats

[joaquimchessproblem@gmail.com](mailto:joaquimchessproblem@gmail.com)

Plaça de l'estació 1, 3r,3a.

08500-Vic

Catalonia (Spain)

Joaquim Crusats; *StrateGems*, 2015.

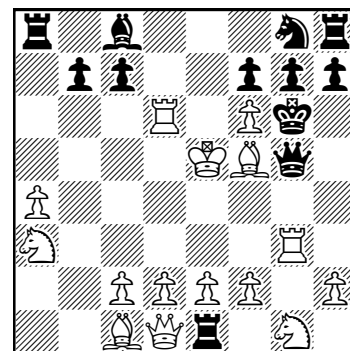
*StrateGems*, Vol. 18, January-March 2015, SG69, P0394, p.37.

r1b3nr/1pp2ppp/3R1Pk1/4KBq1/P7/N5R1/2PPPP1P/2BQR1N1

SPG 19.5

Joaquim Crusats

*StrateGems*, 2015



(15+12) C+ SPG 19.5

**Solution:** 1.g4 a5 2.Bh3 a4 3.Kf1 a3 4.Kg2 axb2 5.a4 e5 6.Sa3 b1=R 7.Kf3 Rb3+ 8.Ke4 Rg3 9.Sf3 Rg1 10.Rb1 Re1 11.Rg1 Ke7 12.Rg3 Kf6 13.Sg1 Kg6 14.Kxe5 Qh4 15.g5 Be7 16.Rb6+ Sc6+ 17.Rxc6+ d6+ 18.Rxd6+ Bf6+ 19.gxf6+ Qg5+ 20.Bf5+.

*Nine consecutive checks, a record. This problem shows the theme of the 2014 Champagne Tourney (57<sup>th</sup> WCCC, Berne; August 23-30, 2014). At the time of the announcement the record was 8 consecutive checks (K. Prentos, A. Frolikin, Orbit 2010); the record was not beaten in the tournament.*