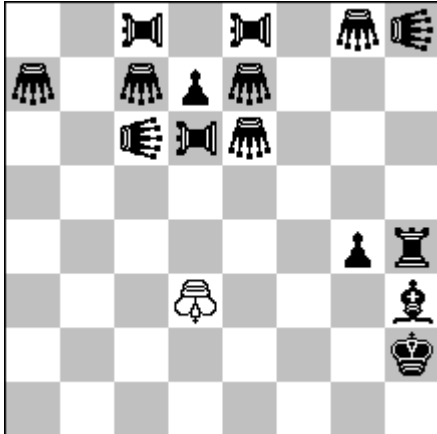


G1. Karol Mlynka, Slovakia (Wolkrova 3, 85101 Bratislava 5 – karol.mlynka@pobox.sk)

879 Julia`s Fairies 30.08.2015 = C+



+2 (1+15)

UltraSchachZwang

WhiteSuperTransmutingKing

G<grashopper>a7, c7, e6, e7, g8

PA<pao> c8, d6, e8

LI<lion>c6, h8

1.Ke4? zz. Gec5+ **a**, Gd5+ **b**, Gce5+ **c**, g3+ **d** 2.K*h4=PA+ **A**, K*h4=LI+ **B**, K*h4=G+ **C**, Ke2=R+ **D**,
(1...Gee5+, Ge3+, PAd5+ 2.K*h4=G+, K*h4=PA+, K*h4=LI+), 1...Bg2+!,

1.Kc4? zz. Gec5+**a**, Gd5+ **b**, Gce5+ **c**, g3+ **d** 2.K*h4=LI+ **B**, K*h4=G+ **C**, K*h4=PA+ **A**, Kc2=R+ **E**,
(1...Llc1+, PAd5+, Gcc5+ 2.K*h4=PA+, K*h4=G+, K*h4=LI+), 1...Bf1+!,

1.Kd4! zz. Gec5+ **a**, Gd5+ **b**, Gce5+ **c**, g3+ **d** 2.K*h4=G+ **C**, K*h4=PA+ **A**, Kd4*h4=LI+ **B**, Kd2=R+ **F**,
(1...Gee5+, Gcc5+ 2.K*h4=LI+, K*h4=G+).

Change of checks in 3 phases and 4 variants Z-34-46 with complete Lačný cycle 3x3 on the same square and cycle of transformation by Pressburger King as Rex solus.

		a	b	c	d
K1?	w	A	B	C	D
K2?	w	B	C	A	E
K3!	w	C	A	B	F

Pressburger King = Super-transmuting King = a king that after being checked by a unit X immediately moves as unit X and loses his royal attribute.

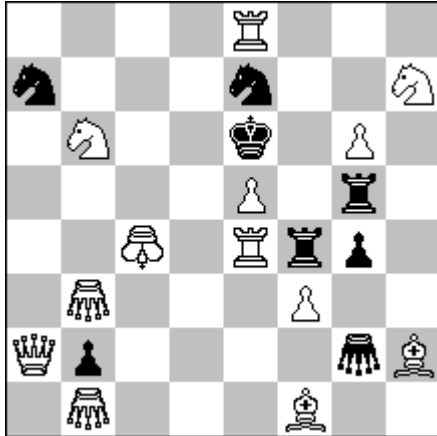
Popeye Windows-32Bit v4.67 & Popeye Windows-32Bit v4.69 & Popeye WINDOWS-32Bit-Version 4.01 = C+

Stipulation +2; Condition WhiteSuperTransmutingKing UltraSchachZwang

White Kd3 - Black PAc8 PAe8 Gg8 Llh8 Ga7 Gc7 Pd7 Ge7 Llc6 PAd6 Ge6 Pg4 Rh4 Bh3 Kh2

G2. Karol Mlynka, Slovakia (Wolkrova 3, 85101 Bratislava 5 – karol.mlynka@pobox.sk)

Com. Marianka Cup 2014 = C+



#2 b) Qa2→h4 (13+8)

WhiteSuperTransmutingKing

(30 days TT C 29.8.2014 – Award Marianka 30.8.2014 <http://festival.soks.sk/turnaje-2014/>)

a) 1.Kc5! (~ **2.Bc4#**) R:e5+ **aA**, R:e4 **bB**, G:e4 **cC** 2.Kd5=R **K**, Sf8 **L**, Gg3# **M**;

b) 1.Kd4! (~ **2.Bc4#**) R:e5 **aC**, R:e4+ **bA**, G:e4 **cB** 2.Q:e7 **N**, Kd6=R **O**, S:g5# **P**.

Active cyclic change of three defensive motifs (A = checking, B = direct guarding, C = providing flight) with change of mates by the same threat. OM-23-33A & Z-23-36.

	~	a	b	c
X!	S	A	B	C
		K	L	M
Y!	S	C	A	B
		N	O	P

Pressburger King = Super-transmuting King = a king that after being checked by a unit X immediately moves as unit X and loses his royal attribute.

Popeye Windows-32Bit v4.69 = C+

White Re8 Sh7 Sb6 Pg6 Pe5 Kc4 Re4 Gb3 Pf3 Qa2 Bh2 Gb1 Bf1

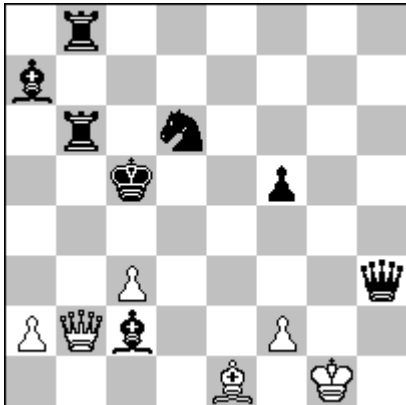
Black Sa7 Se7 Ke6 Rg5 Rf4 Pg4 Pb2 Gg2

Stipulation #2

Condition WhiteSuperTransmutingKing

G3. Karol Mlynka, Slovakia (Wolkrova 3, 85101 Bratislava 5 – karol.mlynka@pobox.sk)

939 Julia's Fairies 22.10.2015 = C+



HS#3 2 solutions (6+8)

1.f4! Bd3! 2.Qg2 (1.f3?) Rb1 3.Qc6+ K*c6#,

1.f3! Sb7! 2.Bg3 (1.f4?) Rg6 3.Qb5+ K*b5#.

Change of wB-pin by Royal battery play and line opening with the dual-avoidance. 1. f2-f3 opens two white lines (in addition to the black mating line) but closes g2-c6, and 1. f2-f4 opens the same two white lines but closes g3-d6.

Popeye Windows-32Bit v4.67

Popeye Windows-64Bit v4.73 = C+

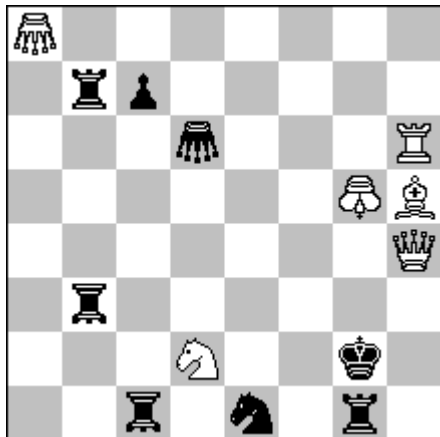
White Pc3 Pa2 Qb2 Pf2 Be1 Kg1

Black Rb8 Ba7 Rb6 Sd6 Kc5 Pf5 Qh3 Bc2

Stipulation HS#3

G4. Karol Mlynka, Slovakia (Wolkrova 3, 85101 Bratislava 5 – karol.mlynka@pobox.sk)

5th Prize Marianka Cup 2014 = C+



#2 b)Gd6→c5 (6+8)

 c) Gd6→b4

G<grasshopper>a8, d6

RH<rookhopper>b3, c1

WhiteSuperTransmutingKing

(30 days TT C 29.8.2014 – Award Marianka 30.8.2014: <http://festival.soks.sk/turnaje-2014/>)

a) 1.Kf5! (~ 2.Rg6#) Rb5+ **aA**, Rb4 **bB**, Rf1+ **d** 2.Kf2=R **X**, Bf3 **Y**, Kg5=R **K#**,

b) 1.Kf6? RHC6!, 1.Kf4(~ 2.Rg6#) Rb4+ **bA**, Rb6 **cB**, Rf1+ **d** 2.Kf2=R **X**, Bf3 **Y**, Kg4=R **L#**,

c) 1.Kf5? RHb5!, 1.Kf6! (~ 2.Rg6#) Rb6+ **cA**, Rb5 **aB**, Rf1+ **d** 2.Kf2=R **X**, Bf3 **Y**, Kg6=R **M#**.

Z-33-45 & OM-32-32 = cyclic transferred mates and active cyclic change of defensive motifs in 2 variants and 3 phases (**A**=checking, **B**=guarding.)

	~	a	b	c	d
N!	R	X	Y	-	K
motif		A	B	-	-
O!	R	-	X	Y	L
motif		-	A	B	-
P!	R	Y	-	X	M
motif		B	-	A	-

Pressburger King = Super-transmuting King = a king that after being checked by a unit X immediately moves as unit X and loses his royal attribute.

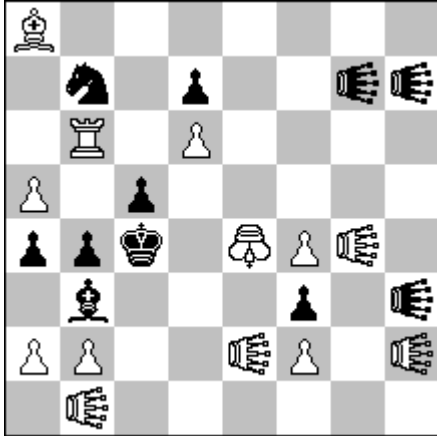
Popeye Windows-32Bit v4.67 & Popeye Windows-32Bit v4.69 & Popeye WINDOWS-32Bit-Version 4.01 = C+

White Ga8 Rh6 Kg5 Bh5 Qh4 Sd2 - Black Rb7 Pc7 Gd6 RHb3 Kg2 RHc1 Se1 Rg1

Stipulation #2; Condition WhiteSuperTransmutingKing

G5. Karol Mlynka, Slovakia (Wolkrova 3, 85101 Bratislava 5 – karol.mlynka@pobox.sk)

651 Julia's Fairies 26.11.2014 = C+



#3 (13+11)

LI<lion>b1,e2,g4,g7,h2,h3,h7

WhiteSuperTransmutingKing

1.LIa6! ~ 2.a:b3+ LI:b3 (a:b3) 3.LI:a4#,
1...Bc2+ 2.Kd3=B+ Kd5 3.Bc4#,
1...S:d6+ 2.K:d6=S+ Kd3 3.Sc4#,
1...LIh1+ (LIg2+) 2.Kg2=LI+ Kd3 3.LIc2#,
1...LIf5+ 2.K:h7=LI+ Kd5 3.LI:d7#,
(1...B:a2, Bd1 2.LIc8+ LIc7 3.R:b4#).

Fairy Siers-batteries with transformation of Pressburger King as front piece.

Pressburger King = Super-transmuting King = a king that after being checked by a unit X immediately moves as unit X and loses his royal attribute.

Popeye Windows-32Bit v4.69 = C+

White Ba8 Pd7 Rb6 Pd6 Pa5 Ke4 Pf4 LIg4 Pa2 Pb2 LIe2 LIh2 LIb1

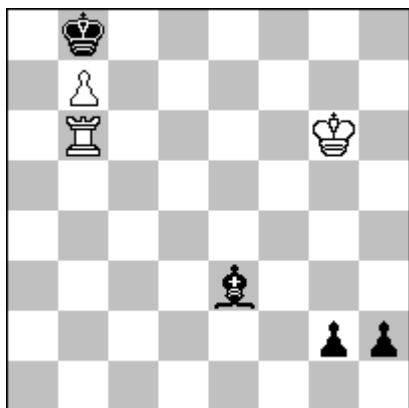
Black Sd8 Sb7 Pe7 LIh7 Pc5 Pa4 Pb4 Kc4 Bb3 Pf3 LIh3 Pf2

Stipulation #3

Condition WhiteSuperTransmutingKing

G6. Karol Mlynka, Slovakia (Wolkrova 3, 85101 Bratislava 5 – karol.mlynka@pobox.sk)

Lob KoBulChess 2014 = C+



pser-HS#4 b) Be3→h4 (3+4)

KoBul Kings & Circe

466 KoBulChess 18.11.2014 (commended)

a) 1.g1R+ Kh7 2.h1R+ Rh6 3.Rg7+ K*g7[b8=rR][+bRh8] 4.R*h6[g7=rR][+wRa1] Ra8+ 5.rR*b7[g7=K][+wPb2]#;

b) 1.g1Q+ Kh6 2.Q*b6[h6=rR][+wRa1]+ rR*h4[b8=rB][+bBf8] 3.h1Q+ rR*h1[b8=rQ][+bQd8] 4.Qdc7 Ra8+ 5.rQ*b7[h1=K][+wPb2]#.

Promotions by combination of Circe and KoBul Kings with interesting mates.

KoBul Kings: *When a piece (not a pawn) of his own side is captured, a King transforms into a Royal piece of the same type as the captured one. When the King is in the form of any Royal piece and there is a capture of one of the pawns of his own side, he becomes a normal King again.*

Popeye Windows-32Bit v4.69 = C+

White Pb7 Rb6 Kg6

Black Kb8 Be3 Pg2 Ph2

Stipulation pser-HS#4

Condition KobulKings Circe

