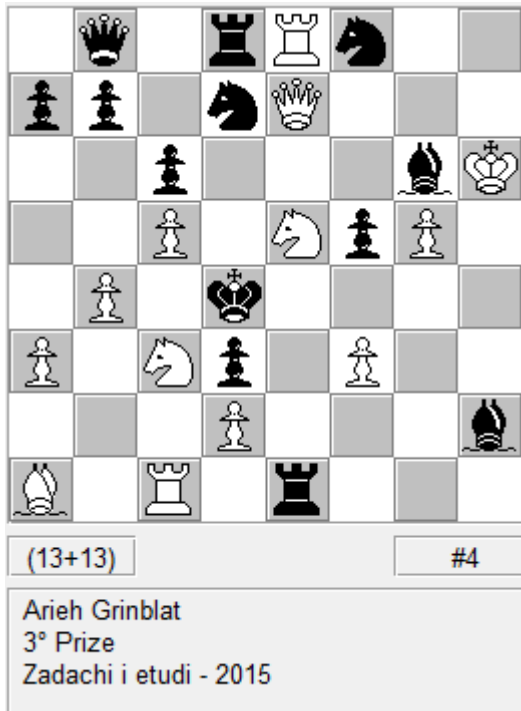


1)



Solution: 1. Qf6! [2. Sxc6+

2. ... Kc4 3. Sa5#]

1. ... Qxe5 2. Sb5+

2. ... Kd5 3. Sc7+

3. ... Qxc7 4. Qd4#

1. ... Sxe5 2. Se4+

2. ... Kd5 3. Qe6+

3. ... Sxe6 4. Sf6#

1. ... Bxe5 2. Se2+

2. ... Kd5 3. Sf4+

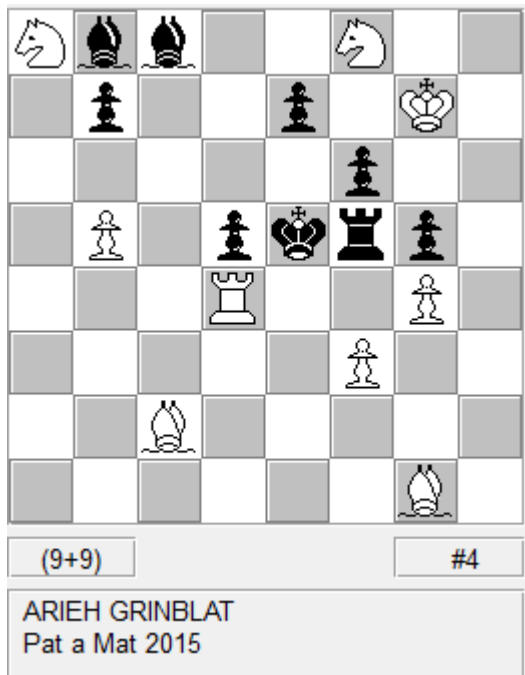
3. ... Bxf4 4. Qd4#

1. ... Rxe5 2. Sd1+

2. ... Kd5 3. Se3+

3. ... Rxe3 4. Qd4#

2)



Solution: 1. Sb6! [2. Sc4+[A]

2. ... dxc4 3. Sxg6+[B]

3. ... Kxe6 4. B/gxf5#]

1. ... Kd6 2. Rxd5+[C]

2. ... Rxd5 3. Sc4+[A]

3. ... Kc7 4. Bb6#

1. ... Rxf3 2. Sxg6+[B]

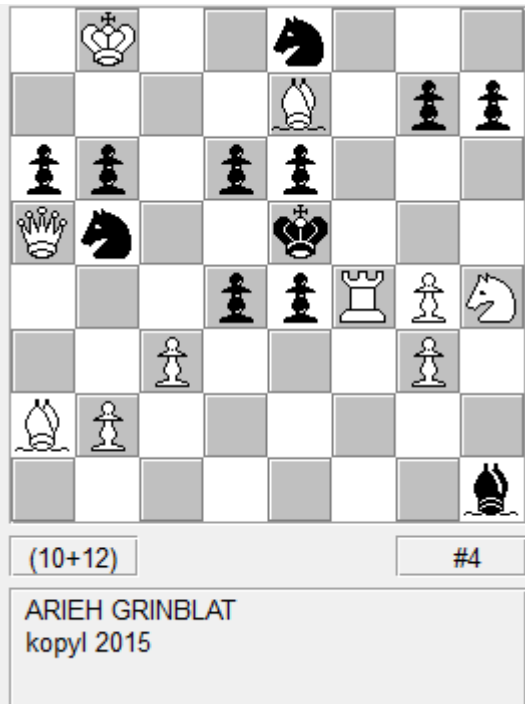
2. ... Kxe6 3. Rxd5 ad lib 4. Sf8#

2. ... Kd6 3. Rxd5+[C]

3. ... Kxe6 4. Sf8#

3. ... Kc7 4. Sa8#

3)



Solution: 1. Qb4! [2. Qc4 [3. Qxe6#]

2. ... Sec7 3. Qxe6+

3. ... Sxe6 4. Rf5#

2. ... d5 3. Rf5+

3. ... exf5 4. Qxd5#

2. ... dxc3 3. Rf5+

3. ... exf5 4. Qd5#]

1. ... g6 2. cxd4+

2. ... Sxd4 3. Qxd6+

3. ... Sxd6 4. Bf6#

1. ... d5 2. Bf6+

2. ... Sxf6 3. Rf5+

3. ... exf5 4. Qe7#

2. ... gxf6 3. Rf5+

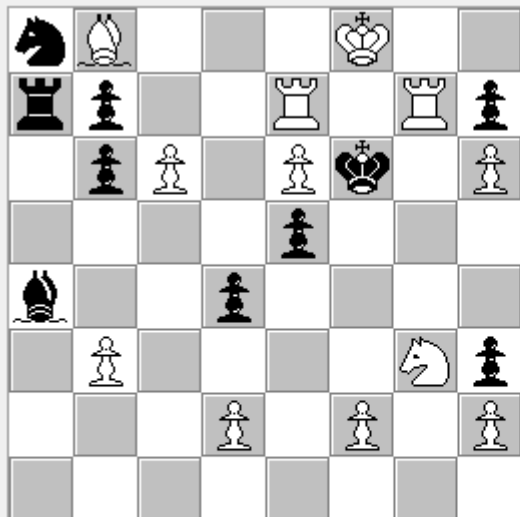
3. ... exf5 4. Qe7#

1. ... dxc3 2. Rxe4+

2. ... Bxe4 3. Sf3+

3. ... Bxf3 4. Qf4#

4)



(12+10)

#4

ARIEH GRINBLAT
Probleemblad 2013

Solution: 1. f3! [2. Se4+[A]
2. ... Kf5 3. Rg5+
3. ... Kf4 4. Rf7#][B]

1. ... Bxc6 2. Ref7+[B]
2. ... Kxe6 3. Re7+
3. ... Kf6 4. Bxe5#[C]
3. ... Kd5 4. Rxe5#

1. ... bxc6 2. Bxe5+[C]
2. ... Kxe5 3. Rg5+
3. ... Kd6/f6 4. Se4#[A]
3. ... Kf4 4. Rf5#

Solution: 1. f3! [2. Se4+[A]

2. ... Kf5 3. Rg5+

3. ... Kf4 4. Rf7#][B]

1. ... Bxc6 2. Ref7+[B]

2. ... Kxe6 3. Re7+

3. ... Kf6 4. Bxe5#[C]

3. ... Kd5 4. Rxe5#

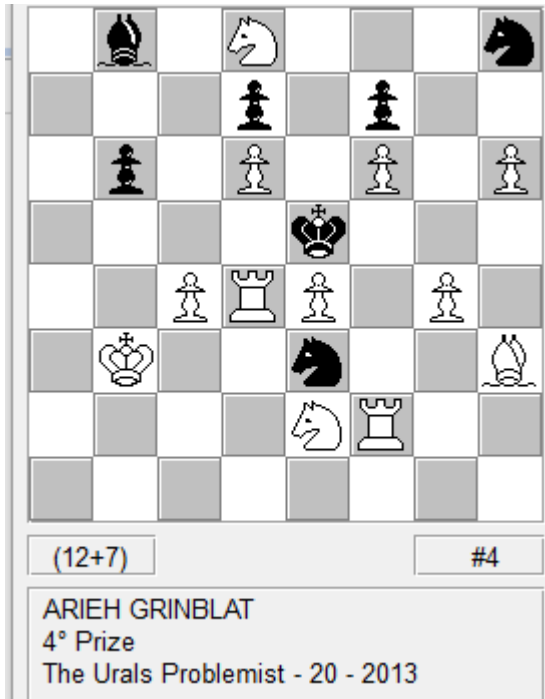
1. ... bxc6 2. Bxe5+[C]

2. ... Kxe5 3. Rg5+

3. ... Kd6/f6 4. Se4#[A]

3. ... Kf4 4. Rf5#

5)



Solution: 1. Bg2! [2. g5 ad lib 3. Rf5+[A]

3. ... Sxf5 4. Rd5[B]

1. ... b5 2. c5 ad lib 3. Rd5+[B]

3. ... Sxd5 4. Rf5#[A]

1. ... Bc7 2. Rd5+[B]

2. ... Sxd5 3. Rf5+[A]

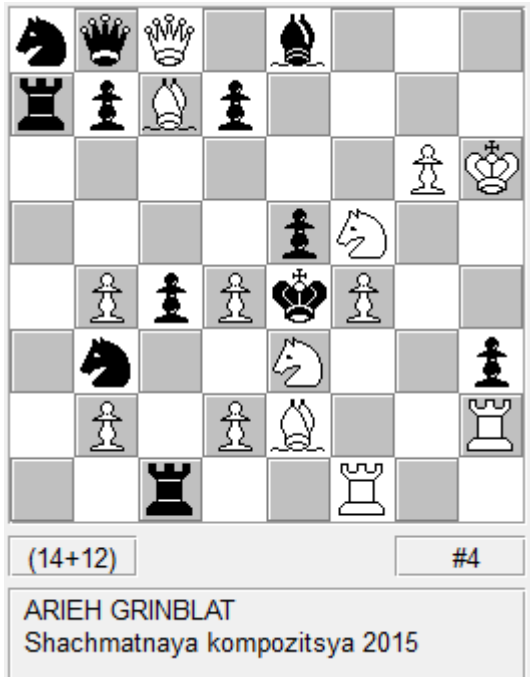
3. ... Kxd6 4. Rxd5#

1. ... Sg6 2. Rf5+[A]

2. ... Sxf5 3. Rd5+[B]

3. ... Kxf6 4. Rxf5#

6)



Solution: 1. Rxh3! [2. d3+

2. ... cxd3 3. Bf3+

3. ... Kxf4 4. Rh4#]

1. ... Sxd2 2. Sd6+

2. ... Kxd4 3. Bb6+

3. ... Sxb6 4. Qc5#

1. ... Rxf1 2. Sg3+

2. ... Kxd4 3. Bxe5+

3. ... Qxe5 4. Qxc4#