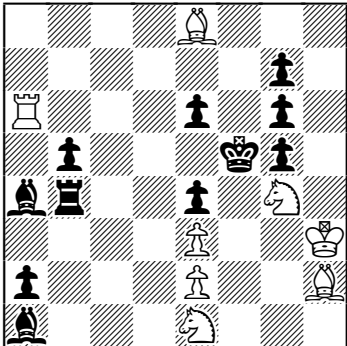


N°1

StrateGems 70 2015



#8

(8+11)

Main plan: 1.Ra7? 2.Rf7+ Bf6 3.Rxf6+ gxf6 4.Sh6#

fails to: 1...Bf6! 2.Rf7 a1Q!

Second plan: 1.Ra7? Bf6 2.Sc2? a1Q 3.Sxa1 fails to 2...Bxc2!

Thus White has to distract Ba4 in order to execute the Second plan.

Fore plan:

1.Bd7! (2.Bxc6#) Bb3 and also distract Ba1

2.Rc6! (not yet 2.Sc2? Bf6 3.Rc8 Bxc2!) Bd4 and only now

Second plan 3.Sc2! a1Q

4.Sxa1 ~

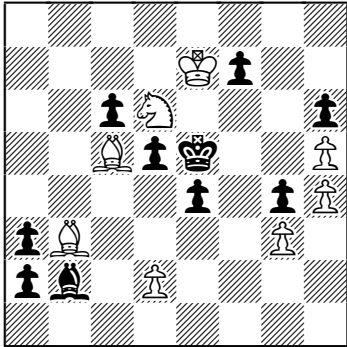
and the Main plan now works

5.Rc8 ~ 6.Rf8+ Bf6 7.Rxf6+ gxf6 8.Sh6# (5...Bc5 6.Rxc5 Re4 7.Rc8 & 8.Rf8#).

A logical problem with Main Plan, Second Plan and Fore Plan.

N°2

The Problemist 2015



#5

(8+10)

Main Plan: 1.d4+? Bxd4 2.Sxf7+ Kf5 3.Sxh6+ Ke5 4.Bd6# (not 3.Bd6? Bf6+!)
is defeated by 1...exd3 e.p.!

Another try: 1.Bxa2? f6 (1...f5? 2.Sf7#) 2.Sf7+ Kf5 3.Bd6 ~ (Bf6+?) 4.Sxh6#
is defeated by 1...Ba1!

Key: **1.Bc2!** and after a1Q 2.Sxf7+ Kf5 the Main Plan works 3.d4! Bxd4 (exd3 e.p.? 4.Bxd3#)
4.Sxh6+ (Sd6+?) Ke5 5.Bd6# with a self-block on d4.
1...d4 2.Bb3 (switchback) e3 3.d3! a1Q 4.Sxf7+ Kf5 5.Be6#

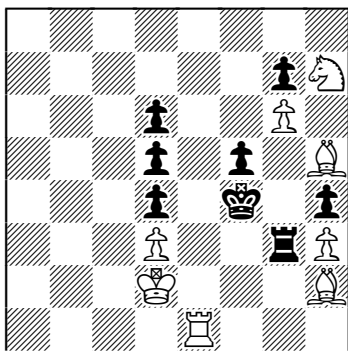
After line opening by the black Pawn we have a mate with a different white Bishop.

N°3

WCCI 2013-2015
Group C, #n

Mike Prcic
2613 Northshore Lane
Westlake Village, CA
United States of America
email: Tuzlak@aol.com

StrateGems 69 2015
after Bo Lindgren



#6

(8+8)

Try:

1.Ke2? Ke5 2.Kf1+ Kf4 3.Be2 Ke3!

Try:

1.Be2 Ke5 2.Bd1+ Kf4 3.Re2 Kf3 4.Re3+ Kf2!

Key:

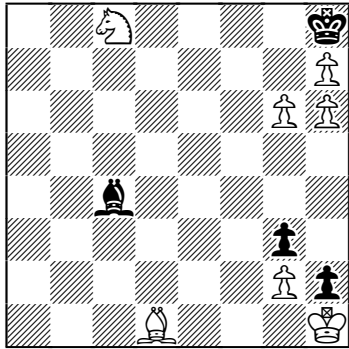
1.Be2! Ke5 2.Bd1+ Kf4 3.Ke2! Ke5

4.Kf1+! Kf4 5.Re2 Kf3 6.Re4#

Creation and play of three batteries with
the focal point e2-square. Stalemate defence
avoidance.

N°4

StrateGems 69 2014



#5√

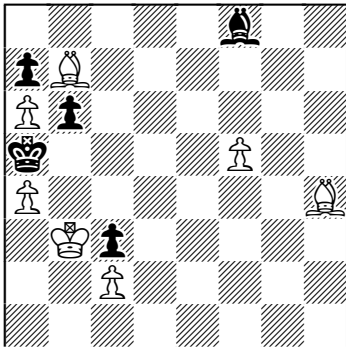
(7+4)

The Main Plan: 1.Bc2? (2.g7#) Bd3! 2.Bxd3?? stalemate.

Key: **1.Sd6!** (Se7 is too slow) threat (2.Bc2 & 3.g7#)
1...Bd5! (and after 2.Bc2? Bxg2+! 3.Kxg2 h1Q+ 4.Kxh1 g2+!)
2.Bf3!! Bg8 3.Be4 (The Main Plan) Bxh7 4.g7+ Kg8 5.Be4#
with a self-block.

N°5

StrateGems 2015



#7√√

(7+5)

1.Bd8/Bg5/Bg3? Bc5!
1.f6? b5! (2.Bd8?)

1.Bf6! (2.Bxc3+ Bb4 3.Bxb4#) Bg7!
2.Be7! (3.Bxg7? Stalemate) Bf8!
3.f6 Bxe7 4.fxe7 b5 5.e8Q bxa4+
6.Kc4! (Qxa4+?) Kb6 7.Qd8# Model mate.